

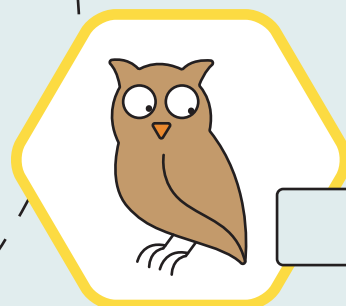
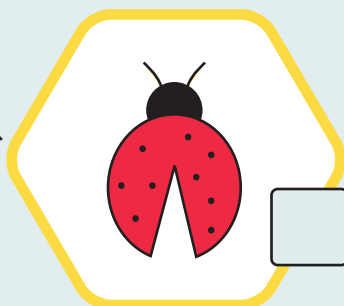
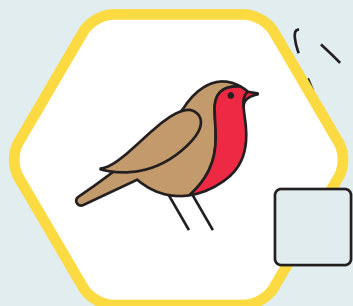
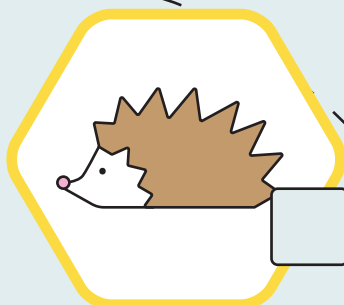
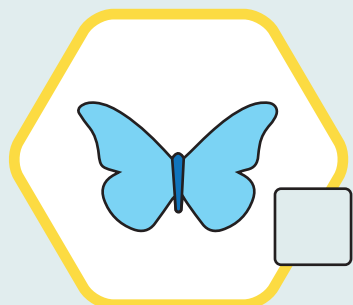
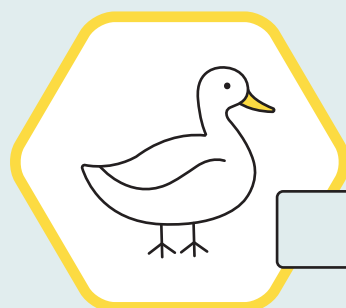
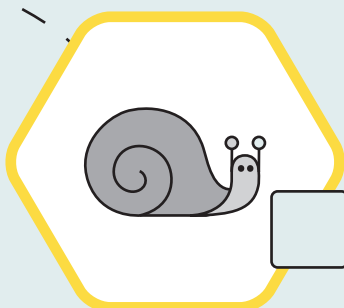
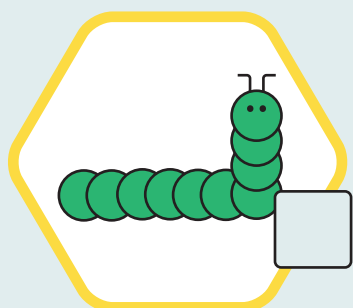
# Join the fun



## Standish Scavenger Hunt

Go take a trip along the route.  
Look out for wildlife on your commute.  
From animals large and small.  
Just tick the list and find them all.

Walk, wheel or cycle the trail.  
Keep your eyes open and spot a snail.  
Whether there's rain or sun, it will always be fun.  
Explore the outdoors – there are prizes to be won.



### How to play:

- 1 Follow the yellow route marked on the map on the reverse.
- 2 Along the route look out for animals pictured in checklist below. WN6 OHQ
- 3 Each animal you find on the route will include a number.
- 4 Add this number to the check list above
5. When you find all the animals take the completed sheet to any of these venues to collect a small prize. Subject to availability.
  - Wigan and Leigh Hospice Charity Shop, Market Street | WN2 3AN
  - Standish Library, Cross Street | WN6 OHQ
  - Standish Community Centre, Moody Street | WN6 OJY**Venues opening hours vary. Please check online before attending.**

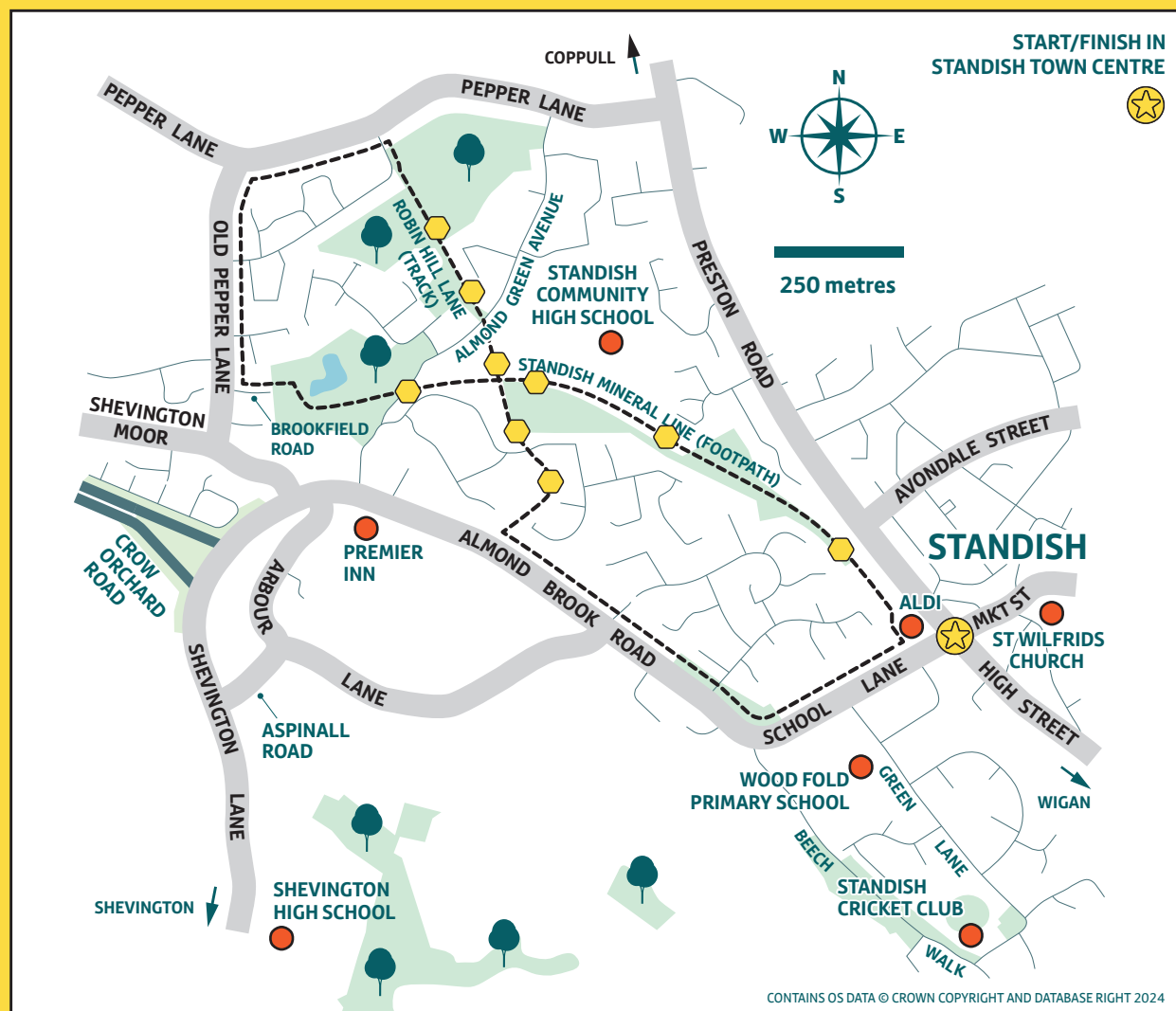
# About the Standish Western Route/Standish Mineral Line Scheme

## Standish Mineral Line/Extension

Wigan Council has transformed the old mineral line in Standish into a safer, multi-user route, providing a fully surfaced and lit bridleway from School Lane to Brookfield Road. This upgrade has improved access to services and facilities and extended the Standish Mineral Line by 2.1km for walking, wheeling and cycling.

## Standish Western Route

This scheme enhances cycling and walking facilities in the Standish area, starting north of Gidlow Lane and ending at Standish Wood Lane.



**Wigan Council**

